



## Migrating to Koha : square peg/round hole?

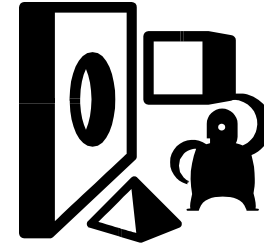


February 5, 2009

WiLS Hour

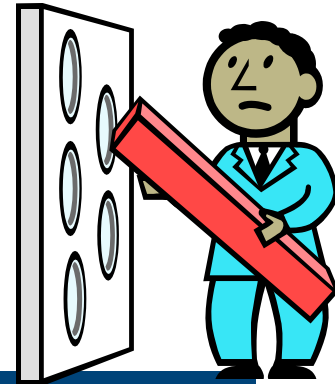
Vicki Teal Lovely

## How we got here



- March 13, 2007 – plug was pulled on Horizon 8.0
- ALA 2007
  - Initial investigation of ILS vendors
  - Met with Josh Ferraro of LibLime who encouraged us to look at Evergreen
- Spring, 2008 – traditional ILS vendor demos
- ALA 2008 – LibLime was no longer supporting Evergreen; focus on Koha
- July, 2008 WiLS World
- Scoping Exercise, September 2008
- Recommendation to LINK, October, 2008

# Navigating Development



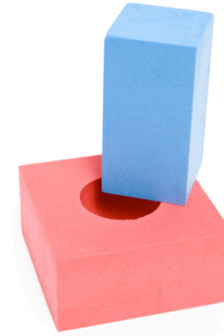
- Scoping exercise, September 2008
- LibLime Development Exchange
- Koha free demos
- Other libraries
- Develop list of core functionality projects

# Risk Management



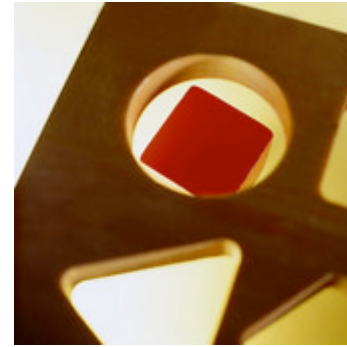
- Traditional ILS vendors
  - The software is a known entity
  - Source code is not available to users
  - Staying with vendors may be risky
- Open source
  - Risk management strategy in business world
  - Source code is available to users
  - Yet migrating to Open source may be risky

# Hosted services



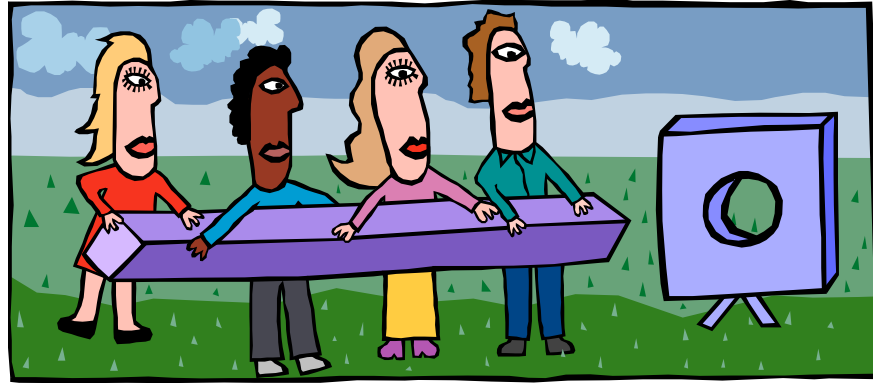
- Traditional ILS
  - Typically hosted on local servers
  - Not new to library world, but not common
- Open Source
  - Common strategy in the business world
  - LibLime encourages hosted services
  - May save money and staff resources
  - Some Concerns—loss of control and response time issues

# Software development



- Traditional ILS
  - Enhancements process
  - They choose development based on resale value
- Open Source
  - Pay for development (option to share costs) or we can develop the software ourselves
  - Benefit from development in community
    - Release peer review process with a release manager

# Vendors & Contract



- Traditional ILS
  - Paying for software, support and licenses
  - One vendor, one primary product
  - Go through ILS vendor for most third-party products
- Open Source
  - You are paying for support NOT software and NOT licenses
  - You can pay for software development separate from contract
  - May pay for hosted services and migration services.
  - Multiple vendors to choose from (LibLime, PTFS) or go with no vendor
  - Contract with third-party product vendors directly

# Users Group



- Traditional ILS
  - Coordinate enhancements
  - Advocate between customers and vendor
  - Source code is escrowed
- Open Source
  - Users must work together with developers/vendors in a “community”
  - One task may be to coordinate development projects
  - KohaCon 2009



**We think the peg fits!**

